

# Flowermate V5.0S PRO Manual



## 3 IN 1 VAPORIZER

The Flowermate V5.0S PRO has all the same great Features as the traditional Flowermate V5.0S, such as, Non Combustion ceramic heating chamber, fully isolated air path to allow for clean and pure vapor, and a Borosilicate glass mouthpiece. The V5.0S PRO also features a fully adjustable OLED Display with a Temperature range of 104 °F - 446 °F.



## What's in the Box



- 1 V5.0S PRO Dry Herb Vaporizer
- 1 Borosilicate Glass Mouthpiece
- 1 Liquid/Waxy Chamber (Made with Organic Cotton)
- 5 Stainless Steel Screens
- 1 Medium Stainless Steel Pod
- 1 Packing Tool and Dabber
- 1 Cleaning Brush
- 1 AC/DC Wall adapter
- 1 Warranty Information Card
- 1 User Manual

## Key Features

Non Combustion Vaporizer.

Fully Isolated Air Path allows for clean and pure vaping. Advanced Ceramic Heating Chamber. OLED Display with Full Range Temperature Control:104oF-446oF (40oC-230oC).

Sleek, compact design.

Built with the best medical grade materials. Borosilicate Glass Mouthpiece.

Airflow Adjustable: Using the bottom Slider to regulate the air flow into the chamber.

Thank you for making Flowermate Technology your premier brand of choice for exceptionally designed non combustion, multi-use vaporizers. Please read this manual carefully before using your V5.0S PRO Dry Herb Vaporizer..



- A. Power Button
- B. Temperature Control Buttons
- C. Ceramic Heating Chamber
- D. Borosilicate Glass Mouthpiece
- E. OLED Display
- F. Screen Housing
- G. Medium Stainless Steel Pod
- H. Liquid/Waxy Chamber
- I. Charging Port
- J. Mouthpiece Storage compartment

## Product configuration

- A. Power Button - Power On and Off V5.0S PRO.
- B. Temperature Control Buttons - Full range temperature control buttons.
- C. Ceramic Heating Chamber - Thoroughly and evenly heats your blend.
- D. Mouthpiece - Borosilicate glass ergonomically designed.
- E. OLED Display - Clearly view desired settings.
- F. Screen Housing - Holds mouthpiece firmly in place and removable screen housing.
- G. Medium Stainless Steel Pod - Pack your choice blend for present or on the go vaping (best paired with our Load'X Grinder and Loader - sold separately).
- H. Liquid/Waxy Chamber - Fill your choice oil/waxy (not at the same time).
- I. Charging Port- For AC/DC Wall adapter.
- J. Mouthpiece Storage Compartment - Conveniently store the mouthpiece for compact portability.

## How to Use V5.0 Mini PRO with Dry Herbs

### LOAD

Open slider at the bottom of V5.0S PRO and remove mouthpiece from the storage compartment. Insert Screen into ceramic heating chamber.

Note: Screens (5 included) in the housing unit and heating chamber can be changed periodically to ensure clean vaping. Additional screens sold separately.

### To vape without Medium Stainless Steel Pods:

Load choice blend loosely into the ceramic heating chamber. Tamp down with the dabber tool. Do not over-fill. (note: do not turn on device while loading blend).



### **To vape with Medium Stainless Steel Pods:**

Unscrew Pod Lid and loosely fill your choice blend into the Pod (Recommended to use our patented Load'X Grinder & Loader for mess free grinding and loading). Tap Down with the dabber tool. Do not over-fill. Close Pod Lid. Insert Pod into

For on-the-go vaping, extra pods along with ceramic heating chamber.

Load'X Grinder & Loader (sold separately ) can be pre-filled for later use.  
(note: do not turn on device while loading pods).

Attach V5.0S PRO mouthpiece.



## **Introduction**

Maximize your vaping experience with our Load'X Dry Herb Grinder and Loader! Flowermate's uniquely patent pending design was created as the perfect accessory to grind and load your herbs, mess free into the stainless steel pods.

Mess free grinding and loading.  
Compact design for on the go use.  
Transparent design to see your blend.  
Load 2 pods simultaneously.  
Convenient and easy to use.

Mess free grinding and loading. Compact design for on the go use. Transparent design to see your blend. Load 2 pods simultaneously. Convenient and easy to use.

## ACTIVATE

Rapidly press Power button five times within 2 seconds to power on V5.0S PRO. The display will indicate “SYSTEM ON”. The screen will read “ACTUAL TEMPERATURE” and “SET TEMPERATURE”.

Actual Temperature: the current temperature of the device

Set Temperature: the requested temperature to vape.



Press and hold “+” and “-” buttons simultaneously to change from Fahrenheit to Celsius degrees or from Celsius to Fahrenheit degrees.

Adjust to desired temperature manually using “+” or “-” buttons. The temperature will increase/ decrease in 1° increments. (Tip: press and hold the “+” button for one second to automatically increase temp and press “-” to stop. Do the same with the “-” to automatically decrease temperature).

Let V5.0S PRO sit as it heats automatically to arrive “SET TEMPERATURE” When the Set Temp.

is the same as the Act. Temp. , the device is ready to use.

To Power Off V5.0S PRO, rapidly press power button 5 times within 2 seconds.

## SAVOR

To Vape: Inhale slowly through mouthpiece and enjoy your blend. Enjoy 6 minutes of uninterrupted vaping. Hold power button for 3 seconds to resume.

## How to Use V5.0S PRO with oil/waxy



### Oil

Fill oil/waxy chamber with at least 5 drops of (0.2 - 0.3ml) oil. Let oil settle for a few seconds.

Insert oil/waxy chamber into ceramic heating chamber (note: do not turn on device while loading oil/waxy chamber).

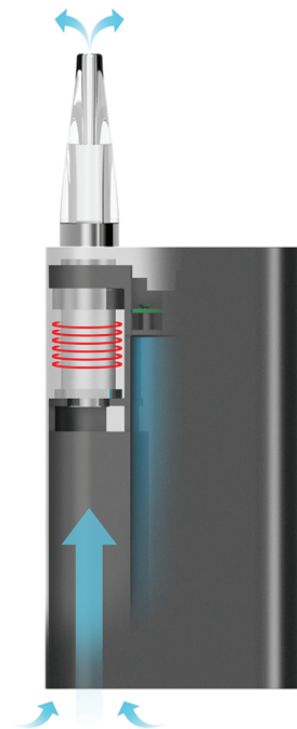
### Waxy

Place concentrated oil around the recess of the lid. Screw lid on to oil/waxy chamber.

Insert oil/waxy chamber, with lid facing down towards ceramic heating chamber (note: do not turn on device while loading oil/waxy chamber).

## Fully Isolated Air Path for Clean Vaping

Air is fully directed to the heating chamber, isolating its path from the electronics. Ensuring a clean and pure vaping each time.



## Technical Specifications V5.0S PRO

Dimensions: 4.09”H x 0.87”D x 2.36”W (104mmH x 22mmD x 60mmW)

Display: OLED display with full range temperature control:104 F-446 F (40 C-230 C)

Capacity: 2600mAh

Output Voltage: 7.4V

Power On/Off: Press power button 5 times consecutively

Safety Power Duration: 6 minutes

V5.0S PRO

Technical Speci

Safeguard: Dual PCB/IC Protection

## Cleaning and Maintenance

The mouthpiece of the V5.0S PRO may become clogged when used for an extended amount of time; resulting in difficult draw resistance or less vapor being released. Use the following guidelines to clean and maintain your device:

Ceramic heating chamber: Use the brush tool to gently clean the walls of heating chamber.

Ceramic Filter: Use a fine paperclip or pin and gently insert between the holes. Push through thoroughly to clear the airway then wipe clean with a lint free cloth.

Mouthpiece: Carefully remove glass mouthpiece from device, wash gently with warm water, rinse and air dry. For stubborn stains, rug gently with a damp cotton swab.

### Tips

For best results, do not over-pack the ceramic heating chamber with your product. Over-packing will cause constricted air flow and uneven vaping.

After filling, use the packing tool to gently stir and aerate the product to ensure vapor is released. Always properly prepare the device before use to reduce blockage of the mouthpice.

Regulate airflow to the chamber using the slider at bottom of the V5.0S Mini PRO. Enhances custom vaping. Take the mess out of grinding and loading your blend with our Load'X Grinder and Loader. Sold separately.



## **Battery and Charging CHARGING**

Initially charge the V5.0S PRO for 4 to 4.5 hours. The battery will stop charging when the icon is full. When the battery level is low, charge battery with included AC/DC adapter. Low battery level will be indicated with icon flashing 10 times repeatedly.

Charging the V5.0S PRO while powered on, the OLED display will stay lit. Charging the V5.0S PRO while powered off, only the battery icon will be visible. Do not use V5.0S PRO while charging. This will cause damage to the device.

To prevent the device from overheating, do not leave the charger plugged in overnight. Do not leave charger plugged in or unattended without the device. Do not charge unit on bare carpet or rug.

### **BATTERY**

The device contains a Lithium-Ion battery. Take caution and dispose in the correct receptacle. Do not discard in trash. Do not over charge. Do not short circuit the battery. at over 200°F

Notice: Lithium Ion Batteries are subject to degradation and reduced run time over the course of regular use while Flowermate took great care in selecting premium quality long life Lithium Ion batteries due to their non-memory features and ability to cycle 300 times preceding degradation, battery life will gradually diminish with extended use.

# Safety

## **WARNING**

Failure to follow these safety instructions could result in personal injury or damage. Users of this device do so at their own risk. Neither Flowermate Technology, LLC nor its retailers assume any responsibility or liability associated with the use/misuse of the device. Flowermate Technology branded products are intended for adult use and consumption only. Keep this booklet in a safe place for future reference.

## **DISCLAIMER**

This device is designed as a mobile solution for the practitioners of aromatherapy and should be used for dry herbal blends as indicated. This device is not intended for use with illegal substances.

## **CHOKING HAZARD**

The V5.0S Mini PRO contains small parts which may be a choking hazard to small children. Keep device away from children.

## **HANDLING**

Do not drop, deform, bend, crush, puncture, incinerate, microwave, shred, paint or insert foreign objects into a Flowermate Technology, LLC V5.0S Mini PRO.

Do not clean V5.0S Mini PRO other than instructed by Flowermate Technology, LLC.

Do not attempt to repair or modify V5.0S Mini PRO yourself.

Do not use a damaged V5.0S Mini PRO charger or non Flowermate Technology charger. Incompatible chargers may carry different voltage, which may be a fire hazard. Use only the charger provided. Failure to do so will void the limited warranty offered on Flowermate Technology products.

Use caution when handling V5.0S Mini PRO, the heating chamber area is hot when the device is powered on. Refrain from direct contact with the main heating chamber when hot. Do not leave the device unattended when it is powered on or while the device is still hot.

## **Safety features**

### **SLEEP PROTECTION**

The device is equipped with a safety sleep mode. When the device is powered on and after 6 minutes vaping, it will go into sleep mode to avoid over-use. Press and Hold the power button for 3 seconds to resume vaping.

### **MEMORY FUNCTION**

The device features a smart memory function. It will memorize the data of current use before powering off. When powered on for next use, the last setting will be displayed.

### **SMART TEMPERATURES LEVELS**

The V5.0S PRO is equipped with a smart OLED display to manually configure any desired temperature setting within the modular range.

## **Warranty**

### **1 YEAR LIMITED WARRANTY**

**Flowermate Technology, LLC warrants this Flowermate Technology, LLC branded device against defects in materials and workmanship under normal use for a period of one (1) year from the date of retail purchase by the original end-user. The original bill of sale is required to redeem warranty. The limited warranty covers one (1) year for electronics, ceramic heating chamber, structural integrity and attachments. The Lithium-Ion battery ninety (90) days. If a physical defect arises and a claim is made within the Warranty Period, at its option and to the extent permitted by law, Flowermate Technology will either:**

**repair the product defect**

**exchange the product with a product warranty that is new or functionally equivalent device or  
refund the purchase price of the device.**



EST. 2016

# CANATURA

HEMP  LIFE

Canatura - Online store with the best  
hemp products for your health

[www.canatura.com/en](http://www.canatura.com/en)

Copyright reserved