

SMONO VAPORIZER BY REINHART

# SMONO No 5

Gebrauchsanweisung, Instructions, Mode d'emploi,  
Manual de Instrucciones,  
Istruzioni d'uso



[www.smono.shop](http://www.smono.shop)

# Safety Instructions

Please read the instructions carefully before use. This instruction manual is an essential part of the vaporizer and must be handed over to the user. For up-to-date information, please contact your Smono dealer.

Please read the instructions carefully before use. This instruction manual is an essential part of the vaporizer and must be handed over to the user. For up-to-date information, please contact your Smono dealer.

## Safety Instructions

Your Smono vaporizer is used for aromatherapy and may only be used for dry herbs. It is not intended for the use of illegal substances and may only be used by adults over eighteen years of age. Keep it away from children. Any other use is prohibited.

Maintenance and repair may only be carried out by qualified personnel. To avoid electric shock, do not open the device yourself. Reinhart GmbH & Co. KG accepts no responsibility for damage caused by inappropriate, incorrect, illegal or unreasonable use.

Never use electronic devices near water. To reduce the risk of electric shock, keep the device away from

moisture and wetness.

Please always make sure that the USB cable is uncovered and not bent.

Only use accessories that have been approved for the Smono. You can find all suitable products on the Internet under [Smono.shop](http://Smono.shop).

Make sure that your power outlet is clean and in perfect condition. Let your Smono cool down completely before you put it away.

Do not block, cover or obstruct the ventilation slots and the air outlet of the evaporator during operation or the cooling phase.

Glass objects must never be dropped or set down too firmly. Hot glass must not be exposed to cold water because of the risk of breakage. Cold heating and glass parts must first be warmed to room temperature before connecting the power supply. Glass must never be treated with force. If parts are difficult to insert or remove, they must be moved carefully back and forth,



which makes it easier to separate the parts. In this case it is necessary to clean all parts.

Your Smono must not be allowed to drop, as it could be damaged. The device may only be placed on dry and level surfaces.

Never leave the unit unattended when it is in operation or cooling down.

This product is not approved as a medical device. Only use the device as intended.

Do not use a damaged device.

Packaging elements such as plastic bags, cardboard boxes, etc. must not be made accessible to chil-

dren, as they represent a potential danger.

The information contained in this brochure is to be regarded only as instructional and precautionary instructions, and as information. None of this information contains or purports to be medical or approved advice. Nor can it be used to diagnose or treat a health problem, condition or disease.

For technical problems, questions about the device as well as for repairs, warranty claims and disposal of the device, please contact the following address:

**reinhardt™**

Tempelhofer Str. 21  
52068 Aachen  
Phone.: +49-241-99123283  
fax: +49-241-99123284  
email: info@smono.shop

# SMONO

*Ready for Adventure!*

Your Smono vaporizer is not a medical device and may not be used for medical purposes.

The Smono Vaporizer should only be used to generate aromas from the herbs and plant parts listed in the chapter Plant Overview. By vaporizing with hot air in the heating chamber of the Smono Vaporizer, the scents and aromas are gently released from the plant material and can be inhaled directly.

It is important to use the Smono only with the recommended substances. If other substances are used, there may be a health risk.

## UNPACKING

Please check your Smono, accessories and cables for transport damage when unpacking. If the vaporizer has been damaged due to improper transport by a delivery service, please contact your dealer or the Smono support. All packaging elements - such as

plastic bags, cardboard boxes or organic cleaners - must not be made accessible to children, as they represent a potential danger. We recommend that you keep the sturdy original packaging for later use.

## INFLUENCING FACTORS

The quantity of dissolved aromas and thus the density of the vapour is essentially determined by four factors: Depending on the origin and time of harvest of the plant material, the amount of aromas it contains, varies considerably.

Through the amount of herbs in the filling chamber, you can directly influence the intensity of the steam.

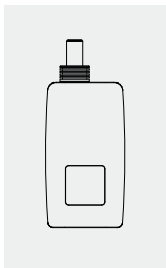
The finer the herbs are ground, the larger the surface area. However, a grain size of at least one millimetre should be ensured in order not to



## INCLUDED IN DELIVERY

Smono 5 Vaporizer version 2020  
 Smono BIO cleaning wipes  
 Instructions DE, EN, FR, IT, ES  
 Mouthpiece made of laboratory glass  
 Smono battery in the device  
 Mouthpiece attachment  
 Screwdriver  
 Smono bag  
 Pipe cleaner  
 USB-C cable  
 Brush

clog the sieves.  
 The easiest way to influence the result is to adjust the temperature. The higher the temperature, the more aromas and fragrances are released at once. However, if the temperature is set too high, unpleasant tasting roasting aromas are released. It is recommended to increase the temperature step by step until you reach the range just below the roasting temperature. The evaporation process should be repeated several times until all aromas have been used up.



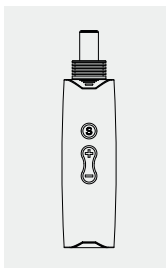
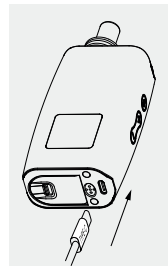
## PUTTING IT INTO OPERATION

The Smono vaporizer must not be operated unattended. If you want to briefly switch off the vaporizer during operation, only use heat-resistant, flat, stable and firm surfaces. Never place the Smono on soft or easily combustible surfaces.

## CHARGING THE BATTERY

The charging time for a new, discharged battery is about two hours. Please fully charge the battery before first use.

To do this, connect the USB-C cable to the charging socket of the vaporizer and then to a suitable USB port. Stay present during the charging process. Please do not use the device during the charging process.



## POWER ON

Please press the on/off switch five times within two seconds. The welcome screen indicates that the Smono is on. The smono always heats up to the previously set temperature.

*to switch it on,  
quickly press the  
start button 5  
times*

## CURRENT TEMPERATURE

In the upper left corner of the green square, the current temperature is displayed.

## TARGET TEMPERATURE

The desired temperature is displayed in the yellow square. By pressing the «+» or «-» button, it can be adjusted in 1°C steps.



## TIMER

Once the Smono is switched on, a security timer of 300 seconds is counted down. If no button is pressed for 40 seconds, the screen saver appears. By pressing a button, the Smono is reactivated.

## CHARGING DISPLAY

The battery indicator shows the charge level of the Smono in the blue field.

## SETTING THE VAPORIZATION TEMPERATURE

When the Smono is switched on, you change the temperature by pressing the „+“ or „-“ button on the side of the device once. You can adjust the Smono in 1°C steps by pressing the button. The temperature range is from 160°C - 240°C.

If the steam intensity is very high, the concentration of aromas and fragrances can cause irritation of the respiratory tract. In this case you should lower the temperature and thus reduce the intensity of the vapours.

Please let the Smono heat up to the

highest temperature a few times before the first use.

For more information about the vaporization temperatures, see the section „Plant overview“.

The default temperature unit is °C. To change to °F, press „+“ and „-“ simultaneously for 2 seconds.

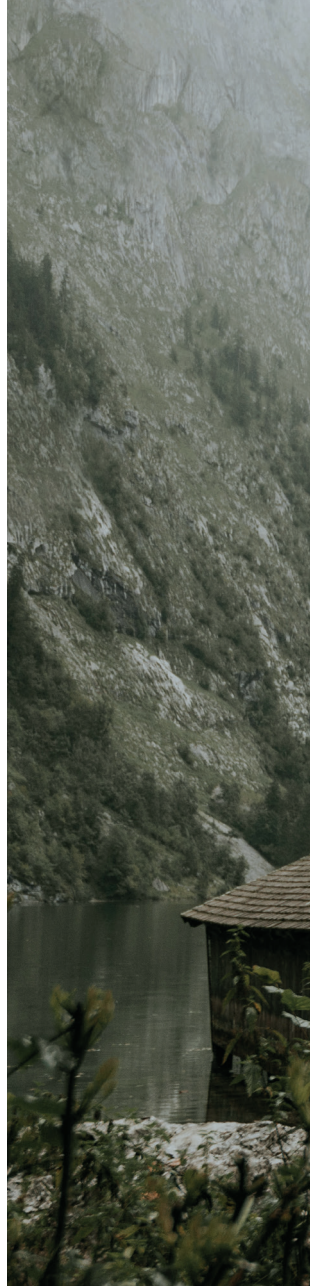
## FILLING THE CHAMBER WITH HERBS

Please only fill your Smono when it is switched off and cooled down. Please remove the magnetic mouthpiece. The herbal chamber should be filled as completely as possible. If the chamber is only partially filled, the plant material can slip, so that the hot air flows past the herbs without efficiently and completely releasing the aromas. Please do not compress the herbs too much to allow a good air flow. Please carefully remove any excess plant material near the filling chamber so that the mouthpiece can be fitted tightly.



## SWITCH OFF

Please press the on/off switch five times within two seconds. The exit screen will indicate that the Smono is switched off. Let the Smono cool down completely before putting it away.







# Plant overview

If you have health problems, please consult your doctor or pharmacist before using the Smono vaporizer.

The following overview shows which plants are suitable for vaporization in the Smono. It is quite possible that a plant may cause allergic reactions in the user. In this case we strongly advise against using this plant any further. Please only use plant parts that are listed in this overview and that have been tested according to the guidelines of the European Pharmacopoeia (or comparable) for authenticity, purity and pathogens. Such plants or parts of plants can be purchased in a pharmacy.

## HOPS 154°C

The hop (*Humulus lupulus*) is 3 to 6 metre high and a persistent vine. For the vaporization its cones are used.





## CHAMOMILE 190°C

The true chamomile (*Matricaria chamomilla*) is a plant species within the composite family and grows 20 to 40 cm high. The flowers are used.

## LAVENDER 130°C

Lavender (*Lavandula angustifolia*) belongs to the labiate family (Lamiaceae) with a growth height of up to 1 meter. The flowers are also used in lavender.

## LEMON BALM 142°C

Lemon balm (*Melissa officinalis*) or balm is a plant species within the labiate family. The leaves are suitable for evaporation.



## THYME 190°C

Thyme (*Thymus vulgaris*) is a small shrub that grows to a height of up to 40 centimetres and has an aromatic fragrance. It belongs to the labiate family. The herb is used here.

## EUCALYPTUS 130°C

Eucalyptus (*Eucalyptus globulus*) is a species-rich plant genus in the myrtle family. For the vaporization the leaves are used.

# Cleaning with BIO Power

When the vapours cools down, residues inevitably form in the mouthpiece and the herb chamber.

These parts must be cleaned thoroughly on a regular basis to ensure proper function and good taste.

Please only clean your Smono when it has cooled down completely. It is recommended to clean it after each use.

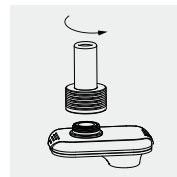
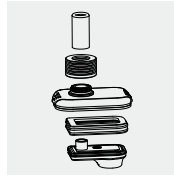
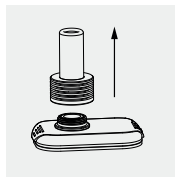
For a quick clean, please remove the mouthpiece and take out the used material. Clean the herbal chamber from impurities with a brush.

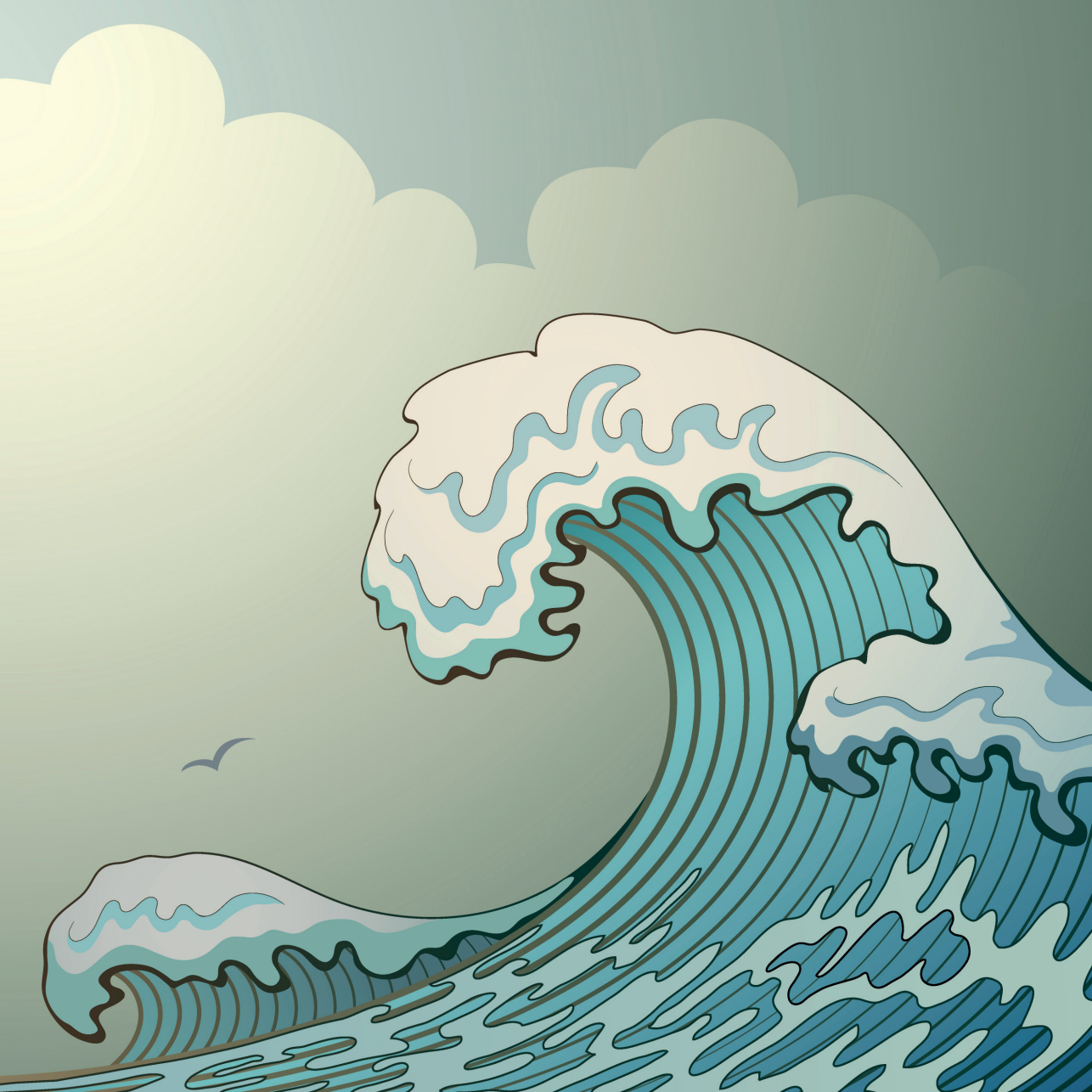
In order to clean the Smono completely from residues, please use the pipe cleaners or cotton swabs and paper towels.

To avoid damaging the vaporizer, we recommend an alcohol-free, gentle vaporizer cleaner such as LaPiLu™ or the Smono cleaner.

Please always keep electronic components dry. Before assembling the herb chamber and mouthpiece, please dry all parts well.

Complete cleaning of the mouthpiece. The mouthpiece has a modular design so that even the smallest gaps can be cleaned. The individual elements can be taken apart and cleaned. The glass mouthpiece including the base can be unscrewed. Furthermore, the actual glass tube at the mouthpiece can be pulled out of the base. Further components can be detached from each other using the plug-in system.





# Smono Warranty

Your Smono has been carefully constructed in Germany and is assembled from the highest-quality materials and individual parts. Of course we know that a Smono is exposed to enormous stress during its long life if its used daily. For this reason we offer a 2 year warranty. In case of a defect you can always contact your dealer and you will receive a new unit or a refund immediately. We will give you an extra year of warranty if you register your Smono vaporizer on [www.smono.shop](http://www.smono.shop) within 90 days after purchase. The extended warranty starts on the date you received your Smono.



# CE ROHS

Your safety is our number one priority. Therefore, Smono vaporizers are produced and distributed in accordance with directive 2014/53/EU and 2011/65/EU. Of course only by using harmless materials.

Among other things, the electromagnetic compatibility is certified according to 2004/108/EG. The EMC certifies that an electrical device does not influence its environment with electromagnetic fields.

RoHS - Restriction of Hazardous Substances' serves to prevent certain hazardous substances in electrical and electronic equipment.

Smono is represented in the EU by Reinhart GmbH & Co. KG, Tempelhofer Str. 21, 52068 Aachen, Germany





EST. 2016

# CANATURA

HEMP  LIFE

Canatura - Online store with the best  
hemp products for your health

[www.canatura.com/en](http://www.canatura.com/en)

Copyright reserved