



User Manual HYBRID X



Maximize your vaping experience with our Hybrid X! Flowermate's main line of Flowermate of multi-purpose noncombustion vaporizer.

Featuring technology

fully insulated air circulation for pure vaping and a chamber

advanced ceramic heating chamber with full modular temperature range for herbal waxes and oil.

What the package includes

- 1 Hybrid X Vaporizer
- 1 Borosilicate glass mouthpiece
- 1 Smiss Subx Subohm Tank
- 1 Extra Coil of Subx Tank
- 1 Liquid / Waxy Chamber (Organic Cotton)
- 5 Stainless Steel Screens
- 1 Medium Stainless Steel Pod
- 1 Packing Tool and Dabber
- 1 Cleaning Brush
- 1 Micro USB Charging Cable
- 1 Warranty and Certificate of Authenticity
- 1 User's Manual



Main Features.

Non-combustion vaporizer.

Industry pioneer the first to combine a vaporizer and a mod box in a single unit.

Exceptional quality made with only medical grade materials.

Fully insulated air path allows clean and pure vaping.

Compatible with SubOhm atomizers.

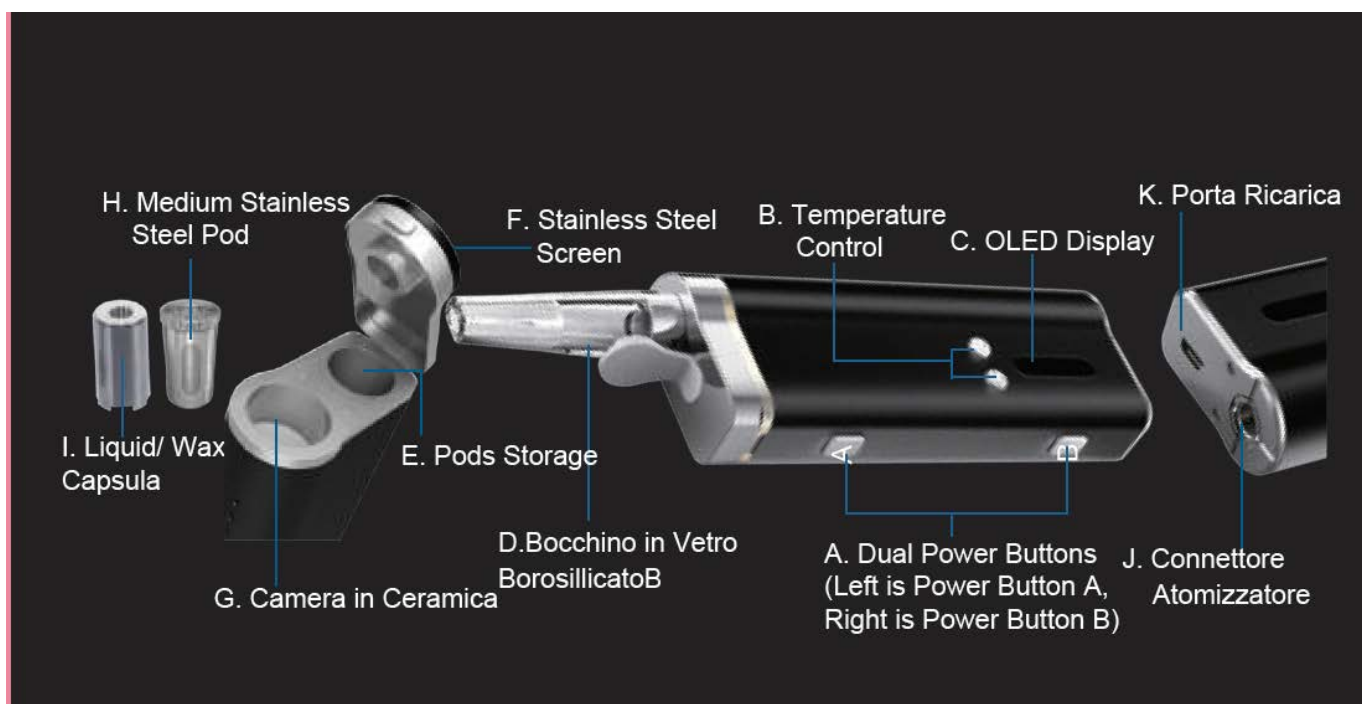
Convenient storage compartment for stainless steel capsules.

Lipolymer battery replaceable high capacity.

Thank you for making Flowermate technology your flagship brand with outstanding designs and a multi-purpose vaporizer.

Please read this manual carefully before using.,

Product Configuration



- A. Dual Power buttons :Controls each function independently. Press 3 times to switch between one mode to the other. A. Dry Herbs B. ELiquid
- B. Temperature control buttons: Full range temperature control buttons in temp mode, wattage control in power mode.
- C. OLED display Clearly displays the desired settings.
- D. Borosilicate glass water bottle with ergonomic design.
- E. Storage: Conveniently packs and carries 3 extra pods.
- F. Stainless steel vaping screen saver.
- G. Ceramic heating chamber Heats herbs evenly and evenly.
- H. Medium stainless steel pod Packs the chosen blend for vaping p (best matched with our Load'X loader and charger sold separately) .
- I. Liquid / Waxy Chamber Fills the chosen oil / wax mixture (not at the same time) .
- J. Clearomizer Tank connector (tank included) .
- K. Micro USB Charging Cable.

How to use the Hybrid with Herbs

NOTE: Use the slider (moving left or right) at the bottom of the Hybrid to adjust the amount of airflow into the chamber.

For vaping on the go, Exstra containers along with Load'X Grinder & Loader (sold separately) can be preloaded for later use..

Open the compartment at the bottom of the Hybrid and remove the mouthpiece from the storage compartment. Insert the screen into the ceramic heating chamber.

NOTE: The Screens (5 included) in the mouthpiece and in the heating chamber can be changed periodically to ensure clean vaping.

Additional screens sold separately..

Vaporize without the Stainless Steel Medium capsule:

Choice of load melts freely in the ceramic heating. Swab with the dabber tool. Do not overfill. (note: do not turn on the device while charging).

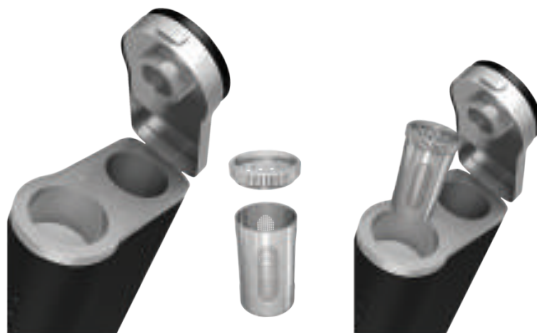
Vaporize with the Stainless Steel Medium capsule:

Unscrew the lid of the container and fill with the chosen mixture in the container. Dab with the dabber tool. Do not overfill. Close the lid of the pod.

Insert the pod into the ceramic heating chamber.

(note: do not turn on the device while loading the pods).

Place the mouthpiece at the Hybrid





Introduction

Maximize your vaping experience with our Load'X Dry Herb Grinder and Loader! Flowermate's uniquely patent pending design was created as the perfect accessory to grind and load your herbs, mess free into the stainless steel pods.

Mess free grinding and loading.
Compact design for on the go use.
Transparent design to see your blend.
Load 2 pods simultaneously.
Convenient and easy to use.

Mess free grinding and loading. Compact design for on the go use. Transparent design to see your blend. Load 2 pods simultaneously. Convenient and easy to use.

POWER ON

Quickly press the power button A five times within 2 seconds to turn it on.

Adjust to the desired temperature using the "+" or "-" buttons. (Hold down the "+" and "-" buttons simultaneously to switch between degrees Fahrenheit or Celsius.)

Press and hold the power button A to activate the ceramic heating chamber.

Allow the Hybrid to warm up to reach the desired temperature.

The symbol indicates that the device is ready for use.

ABSORB

Rotate the mouthpiece and enjoy your blend

How to use the Hybrid with Oils/Waxes

OILS

Fill the cameraa with oils/waxes with at least 5 drops of oil (0.2 0.3 ml). Allow the oil to sit for a few seconds.

Insert the capsule into the ceramic chamber.

(NOTE: Do not turn on the device during the operation).



WAX

Put the concentrated oil around the recess of the lid. Screw the lid onto the oil/wax chamber.

Insert the capsule into the ceramic chamber.

(NOTES: do not turn on the device during the operation)



How to Use Hybrid with Eliquid



Charge

Fill the atomizer (not included) with liquid according to the manufacturer's instructions

Activate and Taste

Quickly, press the power button B five times within 2 seconds to turn on.

Use the "+" or "" buttons to adjust desired volt/watt.

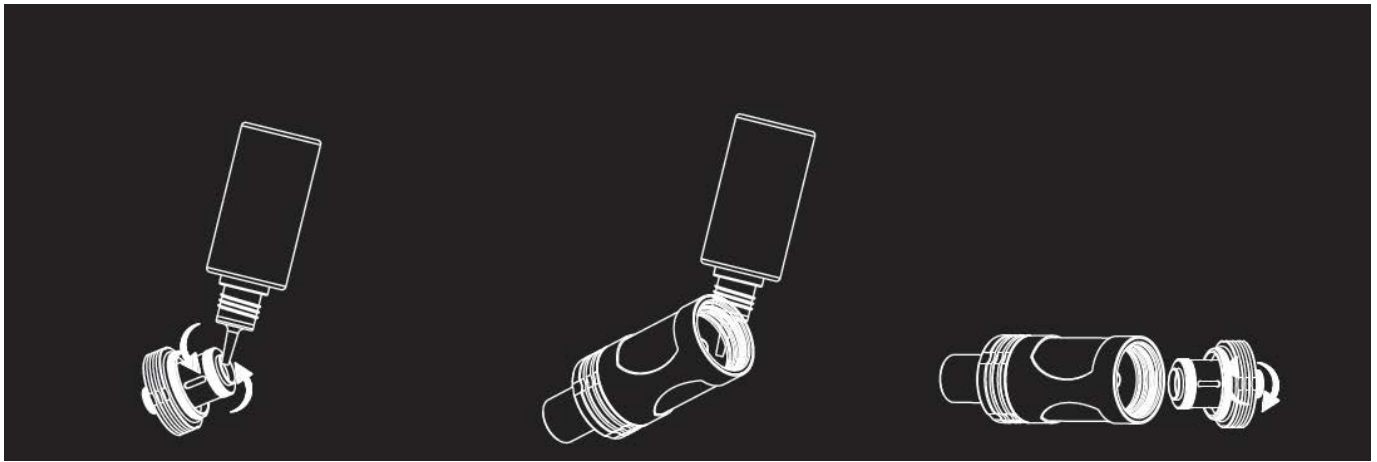
Press and hold the "+" button to increase volts/watts automatically; press "" to stop.

Press and hold the "" button to decrease volts/watts automatically; press the "+" to stop.

Wait 30 seconds after charging eliquid before using

To vape, press and hold the power button B and inhale.

The heating time is 10 seconds.



Step 1

Unscrew the base from the chamber, pre-soak the heating coil first

Step 2

Fill eliquid from the bottom of the tank. Tilt the tank slightly and avoid putting eliquid into the airflow tube center

Step 3

After filling, replace the base, turn it upside down and check any leaks.

Technical Specifications

Hybrid X

Dimensions: 4.33”H x 0.85”D x 1.65”W (110mmH x 21.5mmD x 42mmW)

Display: OLED Digital Display

Capacity: 1500mAh High-Drain Li-polymer Battery

Rated Voltage: 3.7V

Power On/Off: Press power button 5 times consecutively

DRY HERBS VAPORIZER MODE

Temperature Range: 104°F to 500°F (40° C-260°C)

Heat Speed: 10 seconds to selected temperature

Safety Power Duration: 5 minutes

Voltage: 4.2V

E-LIQUID VAPORIZER MODE

Voltage: 3.0V - 8.0V

Wattage: 2.0W - 60W

Compatible Resistance: 0.2Ω-4.5Ω

Default 60W output based on 0.2Ω-1.0Ω

Safety Power Duration: 10 seconds

CLEANING AND MAINTENANCE

The mouthpiece of the Hybrid may become clogged if used for a long period of time, resulting in resistance to recovery or reduced vapor output. Use the following guidelines to clean and maintain the device:

Ceramic heating chamber: use the brush tool to gently clean the walls of the heating chamber.

Ceramic filter: use a paper clip or drill bit and gently insert it between the holes. Pass through the airways to clean them, then wipe with a lint-free cloth.

Mouthpiece: carefully remove the glass mouthpiece from the device, wash gently with lukewarm water, rinse and air dry. For stubborn stains, rub gently with a damp cotton ball.

TIPS

For best results, do not overload the ceramic chamber with product. Overdosing will cause airflow restricted and uneven vaping. After filing, use the loading tool to gently stir and aerate the product to ensure that vapor is released. Always properly prepare the device before use to reduce blockage of the mouthpiece. Adjust the airflow to the chamber using the slider at the bottom of the Hybrid. It enhances custom vaping.



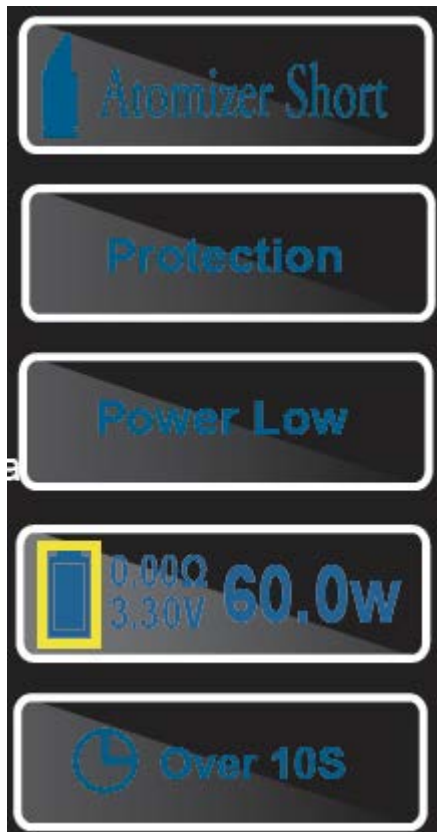
Maximum temperature for use Herbs

Maximum wattage for E-liquid use.

temperature setting desired and/or maximum achieved

Atomizer not present

Low resistance



Short Circuit

Device in protection from excessive or high temperature

Low charge, the device must be recharged

Discharge device

Beyond the duration of vaping

BATTERY AND CHARGING

Initially charge V5.0S PRO from 4 to 4.5 hours. The battery will stop charging when the icon is full. When the battery level is low, charge the battery with the included AC/DC adapter.

The low battery level will be indicated with a flashing icon 10 times more times..

Charging the Hybrid while it is on will keep the OLED display lit.

By charging the Hybrid while it is off, only the battery icon will be visible.

Do not use the Hybrid while it is charging. This will cause damage to the device.

To prevent the device from overheating, do not leave the charger plugged in overnight.

Do not leave the charger plugged in or unattended without the device.

Do not charge the unit on carpet or rug.

Battery

The device contains a lithium-ion battery. Be careful and dispose of it in the correct receptacle.

Do not throw in the garbage. Do not overcharge. Do not short-circuit the battery.

Note: Lithium-ion batteries are subject to degradation and reduced run times during normal use at 200° F; while Flowermate has taken great care in selecting batteries of quality long-lasting lithium-ion batteries due to their non-memory characteristics and ability to cycle 300 times before degradation, battery life will gradually decrease with extended use

Safety

WARNING

Failure to follow these safety instructions could result in personal injury or damage.

Users of this device are therefore at their own risk. Neither Flowermate Technology, LLC nor its dealers assume any liability related to the use/misuse of the device.

Flowermate Technology branded products are intended only for use and consumption by adults. Keep this booklet in a safe place for future reference.

RECOMMENDED

This device is designed as a mobile solution for aromatherapy professionals and should be used for heavy-duty herbal blends as indicated. This device is not intended for use with illegal substances.

CHOKING HAZARD

The Hybrid contains small components that may pose a risk of choking hazard to small children. Keep the device out of the reach of children.



EST. 2016

CANATURA

HEMP  LIFE

Canatura - Online store with the best
hemp products for your health

www.canatura.com/en

Copyright reserved