



Vaporizer CFX

User manual

* Patented convection airflow system with special display (CAS) *

CFX uses innovative heating technology. With the CFX vaporizer, your vaping experience is taken to the next level. The device features a 1.7 inch OLED display. The CFX produces a huge amount of vapor that is thoroughly cooled before it reaches your mouth.

A true convection heating system allows the vaporizer to produce a vapor full of flavor and volume. The CFX vapor is perfectly cooled by the new bottom airflow path. This produces a vapor with absolutely pure flavor that you usually get exclusively from desktop vaporizers.



Package contents:

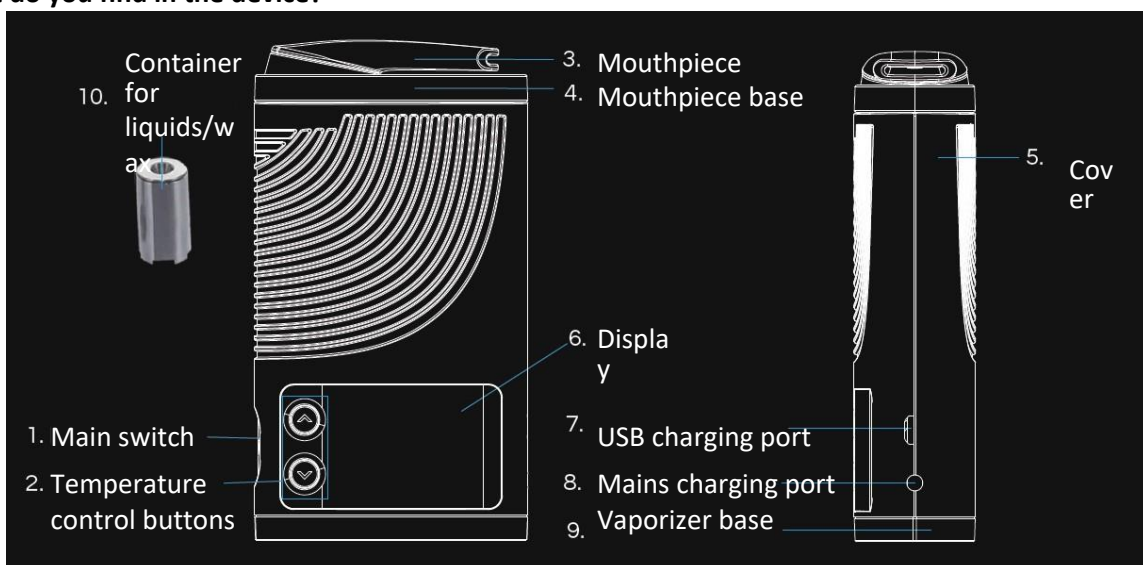
- 1x CFX vaporizer for dried herbs
- 1x liquid/wax container (with organic cotton wool) 1x masher and filling tool
- 1x cleaning brush
- 1x USB charger 1x power adapter
- 1x user manual



Instrument features:

- 1.77-inch (4.5 cm) color display that allows complete control of heating temperature: 100-430°F (37-221°C)
- New generation of patented convection airflow system (CAS) technology.
- A portable vaporizer that is ergonomically designed and very intuitive to hold and operate.
- Non-flammable vaporizer.
- The airway is completely separated. This ensures clean and undisturbed evaporation.
- Compact and robust design.
- The instrument responds by vibrating.
- Made of material designed for medical products and food industry.
- Dual charging: fast charging from 12V mains or regular charging with a 5V (2A) micro USB cable.

What do you find in the device?



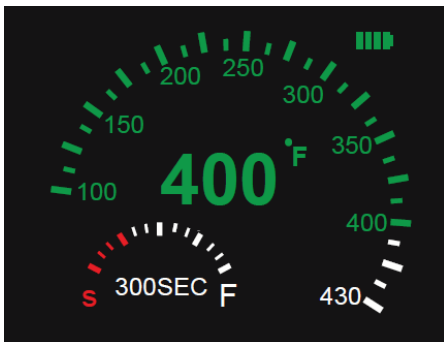
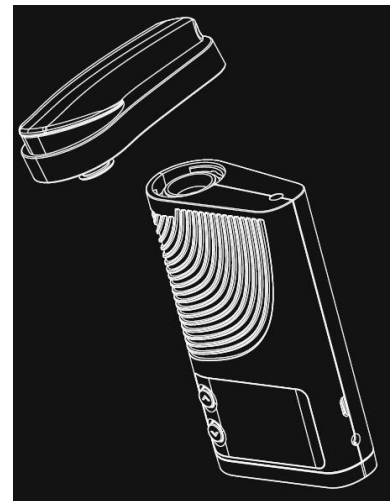
Setting up the vaporizer

1. Main switch - the vaporizer vibrates when the device is switched on/off.
2. Temperature control buttons - You can adjust the temperature in 1°F increments from 100-430°F.
3. Mouthpiece - made of material intended for use in food industry. It can be rotated 360°. Vaporize in any direction
4. Mouthpiece base - made of parts that are easy to disassemble.
5. Cover - is highly resistant to heat. Robust and ergonomic design.
6. Display - 1.77 inch TFT color display that shows temperature, battery, timer, etc.
7. USB charging port - regular charging, we recommend using a five pin micro 2A connector
8. Mains charging port - fast charging 12V 1.5A.
9. Vaporizer base - air inlet.
10. Liquid/wax container - fill the container with the oil/wax (not at the same time) of your choice.

Using the CFX vaporizer to consume dried herbs

Filling

- Remove the mouthpiece. Insert the strainer into the ceramic heating chamber. Note: It is a good idea to change the strainers (pack of 3) inside the unit and the heating chamber regularly to ensure clean vapor. Replacement strainers are sold separately.
- Place the mixture in the ceramic heating chamber. Do not overfill the chamber. Press the mixture with the filling tool (note: do not switch the machine on when filling the chamber).
- Attach the mouthpiece.



Activation

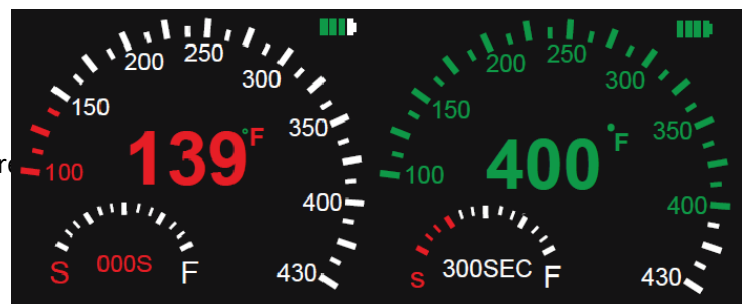
- Quickly press the main switch 5 times in succession within 2 seconds. The display will light up.
- On the display you can see information about temperature, battery, timer, etc.
- One session lasts 300 seconds (5 minutes). "S" means start, "F" means end.
- The temperature range is 100-430°F.

What you see on the display

The display lights up red when the temperature

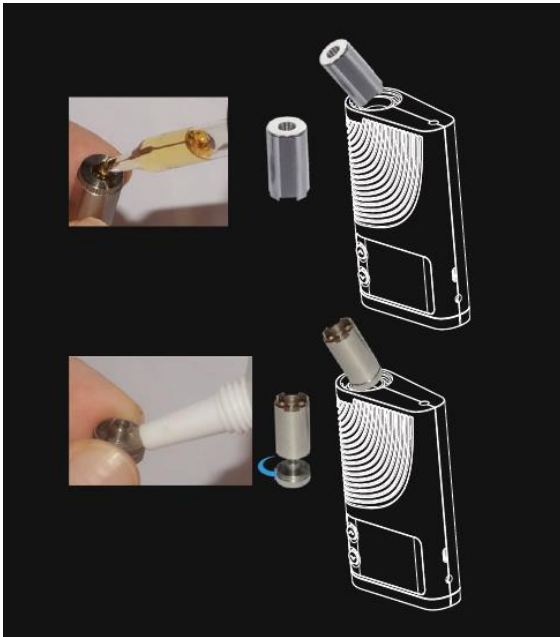
When the device reaches the target temperature, the display will light up green.

At the same time, the timer starts.



How to use the CFX vaporizer with oil/wax

Filling



Oil

- Fill the container with oil/wax: at least 5 drops (0.2-0.3 ml) of oil. Allow the oil to sit for a few seconds.
- Insert the oil/wax container into the ceramic heating chamber (note: do not switch on the machine when filling the oil/wax container).

Wax

- Place the oil concentrate in the hole under the cap. Screw the cap back onto the container.
- Insert the oil/wax container into the ceramic heating chamber with the lid facing down (note: do not turn the unit on when filling the chamber).

Completely separate vapor path for cleaner vaporization

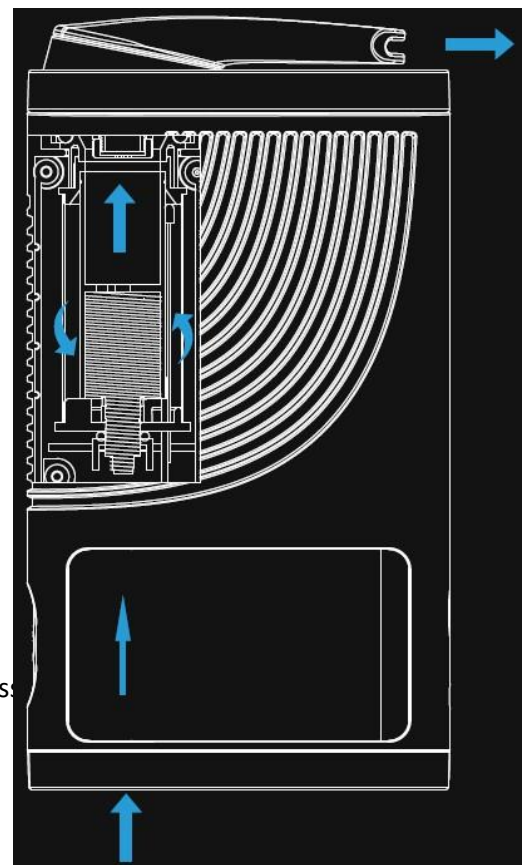
The air flows through the heating chamber and its path is completely separated from the electronic part of the device. As a result, you always get a perfectly clean tasting vapour.

Technical

parameters CFX

Vaporizer



- Dimensions: 12,9 x 3,2 x 7,1 cm
- Temperature range: 100-430°F
- Capacity: 2500mAh
- Output voltage: 7.4V
- Switching on/off: press the main switch 5 times in succession
- Safety shut-off timer: 5 minutes
- Protection: double PCBA/IC protection



Battery and

charging

Charging

- For the first time, charge your vaporizer for 4 - 4.5 hours via micro USB (5V 2A) or 1 - 1.5 hours from the mains (12V 1.5A). The battery will stop charging when the battery icon is full.  When the battery is low again, charge it again either with the included USB charging cable or from the mains. A low battery level is indicated by the icon on the display , which flashes 10 times repeatedly.
- When the CFX is charging in the on state, the OLED display remains lit.
- When the CFX is charging in the off state, only the battery icon remains visible.
- Do not use the CFX when charging. You could damage the device.
- To prevent overheating, do not leave the charger plugged in overnight.
- Do not leave the charger plugged in when responsible persons are not present, whether in or out of the device. Do not charge the device on carpet or rugs.

Batteries

The device contains a Li-on battery. The battery must be disposed of appropriately. Never dispose of it in municipal waste. Do not overcharge or short-circuit the battery.

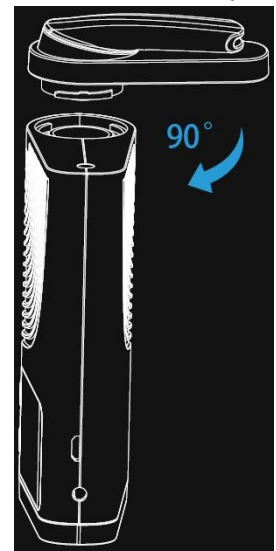
Note: Li-on batteries naturally lose power over time and their battery life diminishes with regular use. While Boundless Technology has done their best to select the best Li-on batteries, as these batteries are non-memory and have the ability to retain full life for up to 300 charge cycles. After that, their lifespan begins to gradually deteriorate.

How to put on and remove the mouthpiece

Fitting the individual mouthpiece components

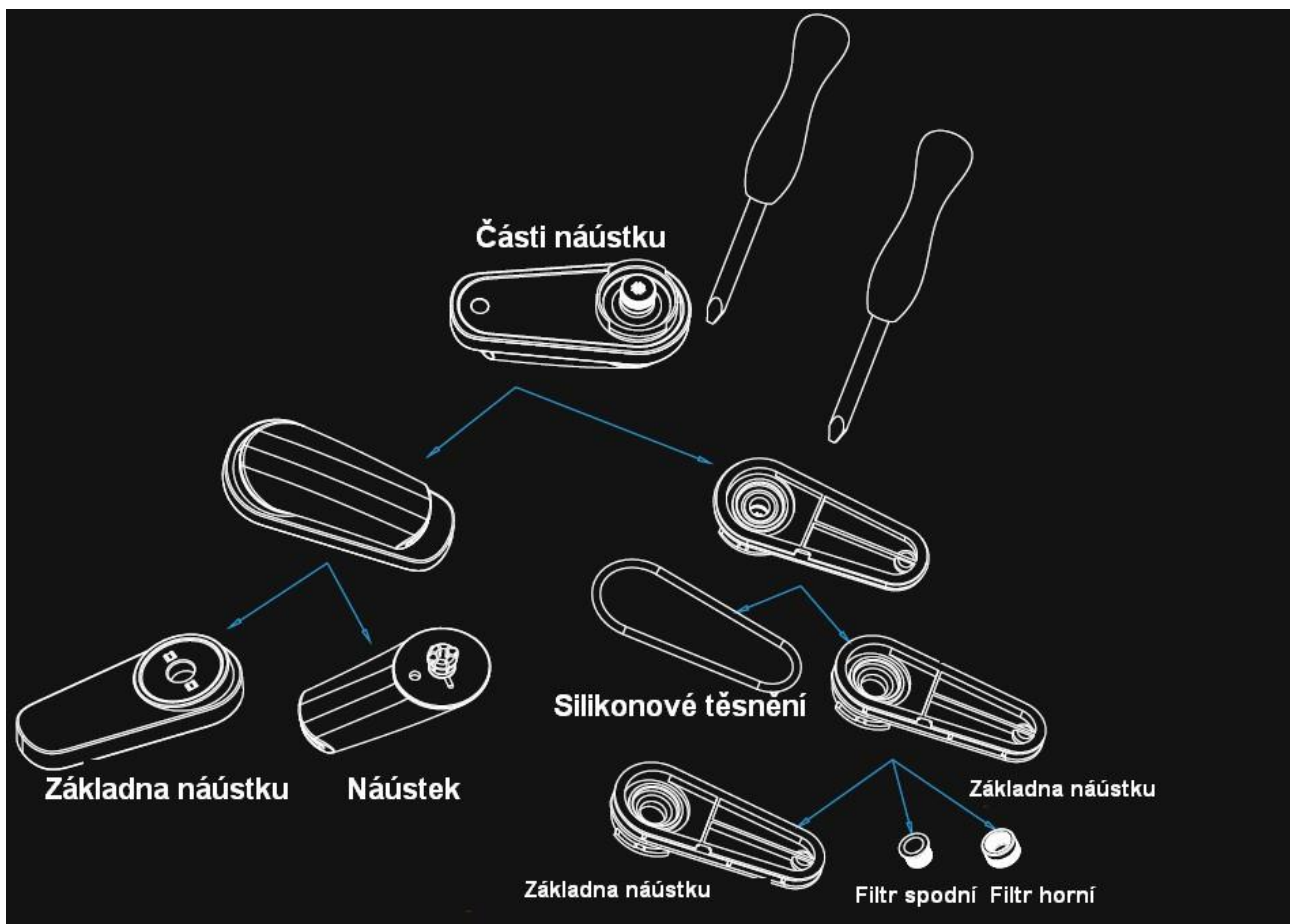
1. Place the mouthpiece components and the device at a 90° inclination.
2. Insert the mouthpiece components into the device facing downwards as shown in the picture.
3. Turn the mouthpiece components clockwise. Remove the

mouthpiece using the above instructions in reverse order.



Mouthpiece layout

1. Use the opening tool to "pry" the mouthpiece and break it in two.
2. You can also unfold the silicone ring with the opening tool (see picture).
3. Unscrew the filter components from the mouthpiece base. You can then disassemble the filter into the top and bottom.
4. Unscrew the mouthpiece from its base.



Safety

Warning

Injury or damage may occur if you do not follow these instructions. Users use the device at their own risk. Neither Boundless Technology, LLC nor the dealers of the instrument accept any liability or financial responsibility arising from the use or mishandling of the instrument. Products labeled Boundless Technology are to be used by adults only. Keep this manual in a safe place for future reference.

Exclusion of liability

This device serves as a mobile solution for aromatherapy and should be used on dried herbs as described here. This device is not for the consumption of illegal substances.

Danger of suffocation

The CFX contains small components that may pose a choking hazard to small children. Therefore, keep the unit out of the reach of children.

How to use the device

- It is prohibited to drop, deform, bend, crush, puncture, ignite, microwave, cut, paint or insert foreign objects into the CFX vaporizer from Boundless Technology, LLC.
- You should not clean the CFX except as described and directed by Boundless Technology, LLC.
- Do not attempt to repair or modify the CFX yourself.
- Do not use a damaged CFX charger or other charger. Incompatible chargers may have different voltages and may cause a fire. Therefore, use only the chargers supplied with the instrument. Should you use other chargers, the warranty provided by Boundless Technology, LLC for the product will no longer apply.
- Be careful when handling CFX. When the unit is switched on, the heating chamber itself and its surroundings are very hot. Avoid direct contact with the main heating chamber when it is hot. Do not leave the instrument unattended when it is switched on or when it is still hot.

Precautions Sleep

protection

The device is equipped with a function to prevent the user from falling asleep. When the device is switched on, it goes into sleep mode after 6 minutes of vaporization. This is, among other things, a protection against excessive use. Press and hold the main switch for three seconds and vaporization will continue.

Memory function

The memory function allows the device to remember information about the current settings before switching off. When you turn it back on, the last settings are displayed again.

Smart temperature setting

CFX is equipped with a smart OLED display, which is used to manually set the target temperature completely to your liking.

Warranty

Limited warranty for one year

Boundless Technology, LLC warrants this device with the company's name on it. The warranty covers defects in material and workmanship under normal use for a period of one (1) year from the date of retail purchase by the original end user. The original proof of purchase of the product must be presented to invoke the warranty. The limited warranty covers electronics, ceramic heating chamber, structural integrity and accessories. Li-on battery warranty is 90 days. If a physical defect is found, you may make a claim within the warranty period and Boundless Technology to the best of its ability and to the extent provided by law either:

- 1) Repairs a defect in the product
- 2) Replaces the product with a new or functionally equivalent one
- 3) Refund money for the purchase of the product.

Exceptions and limitations

This limited warranty applies only to products manufactured by Boundless Technology, LLC, which you can recognize by the trademark "Boundless Technology, LLC" or the logo on the device. The Limited Warranty does not apply to products not manufactured by the company. This warranty does not cover (i) damage caused by accident, abuse, misuse, flood, fire, earthquake, piracy, or other external causes; (ii) damage caused by use of the product in a manner other than that described herein and for which it was manufactured by Boundless Technology, LLC; (iii) the device or any part thereof has been altered to change the functionality or features of the device without the written consent of Boundless Technology; (iv) cosmetic damage including, but not limited to, scuffs, dents and/or damaged plastic.

This warranty applies to the original end user and is non-transferable. Boundless Technology, LLC only warrants products purchased from authorized dealers who work with a Boundless Technology, LLC distributor.

If you have any questions about authorised dealers, further warranty details, etc., please visit the website:

www.BNDLSVapes.com





EST. 2016

CANATURA

HEMP  LIFE

Canatura - Online store with the best
hemp products for your health

www.canatura.com/en

Copyright reserved