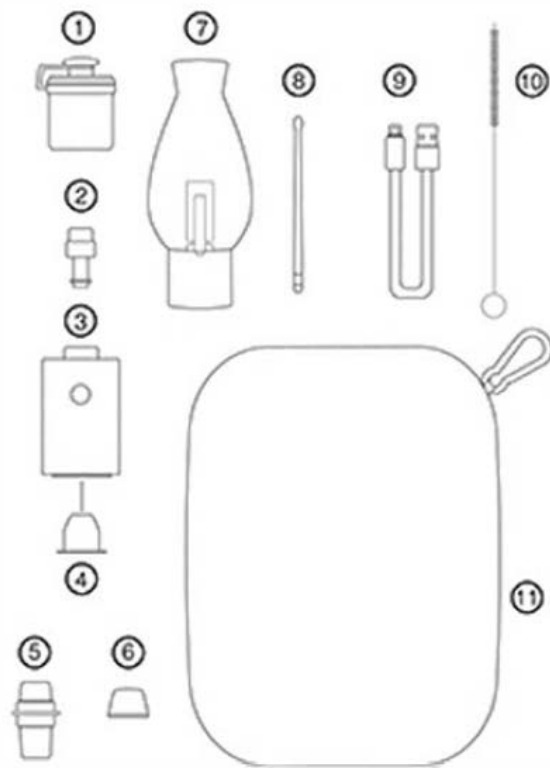
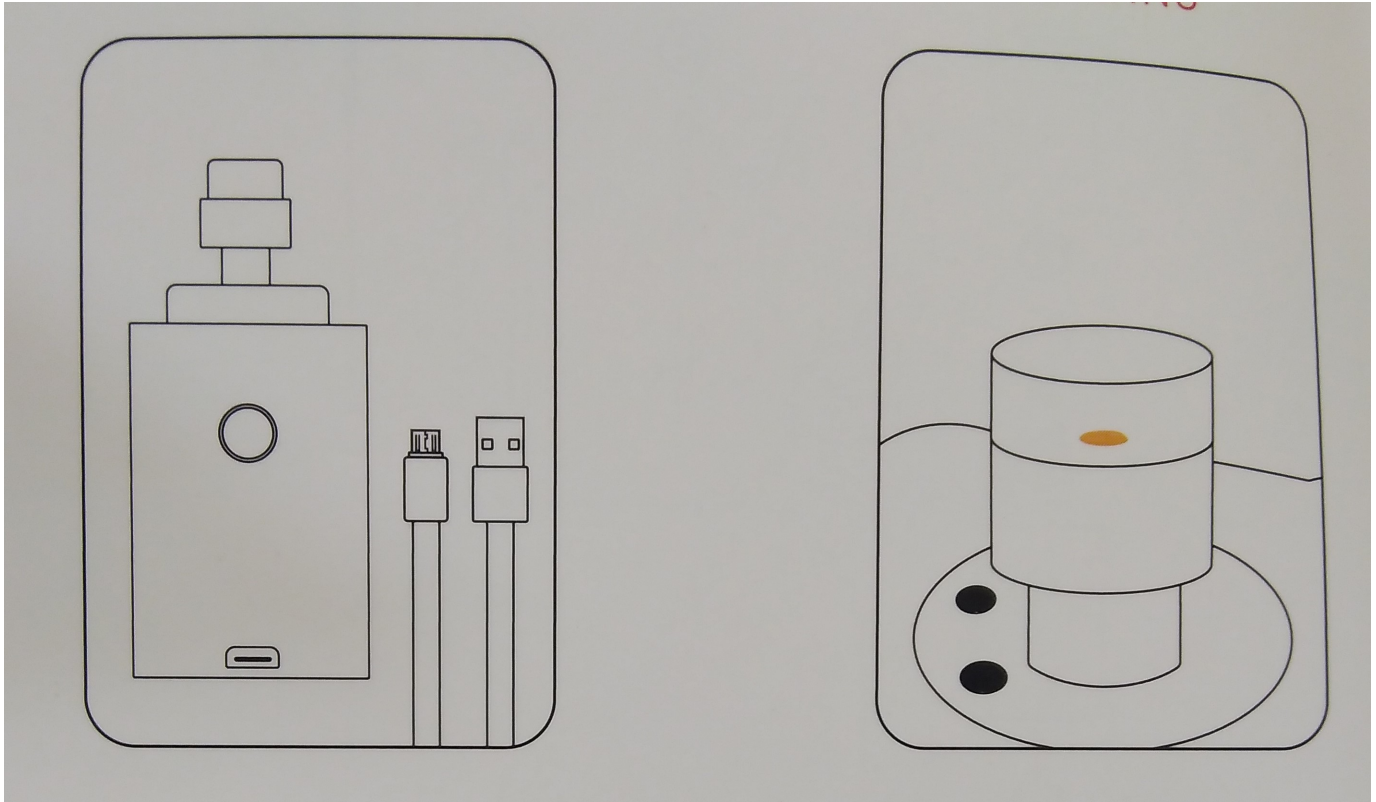


## LINX APPOLO USER MANUAL

### IN THE BOX

- 1 - 1 Carb cap
- 2 - 1 All quartz Atomizer
- 3 - 1 2600mAH Apollo Base
- 4 - 1 Silicone Airflow Sleeve
- 5 - 1 Male Water pipe adaptor /fits 14mm or 18mm Glassware /
- 6 - 1 Silicon Airflow regulator
- 7 - 1 Glass Bubbler
- 8 - 1 Tool
- 9 - 1 USB Charging cable
- 10 - 1 Cleaning brush
- 11 - 1 Carrying case





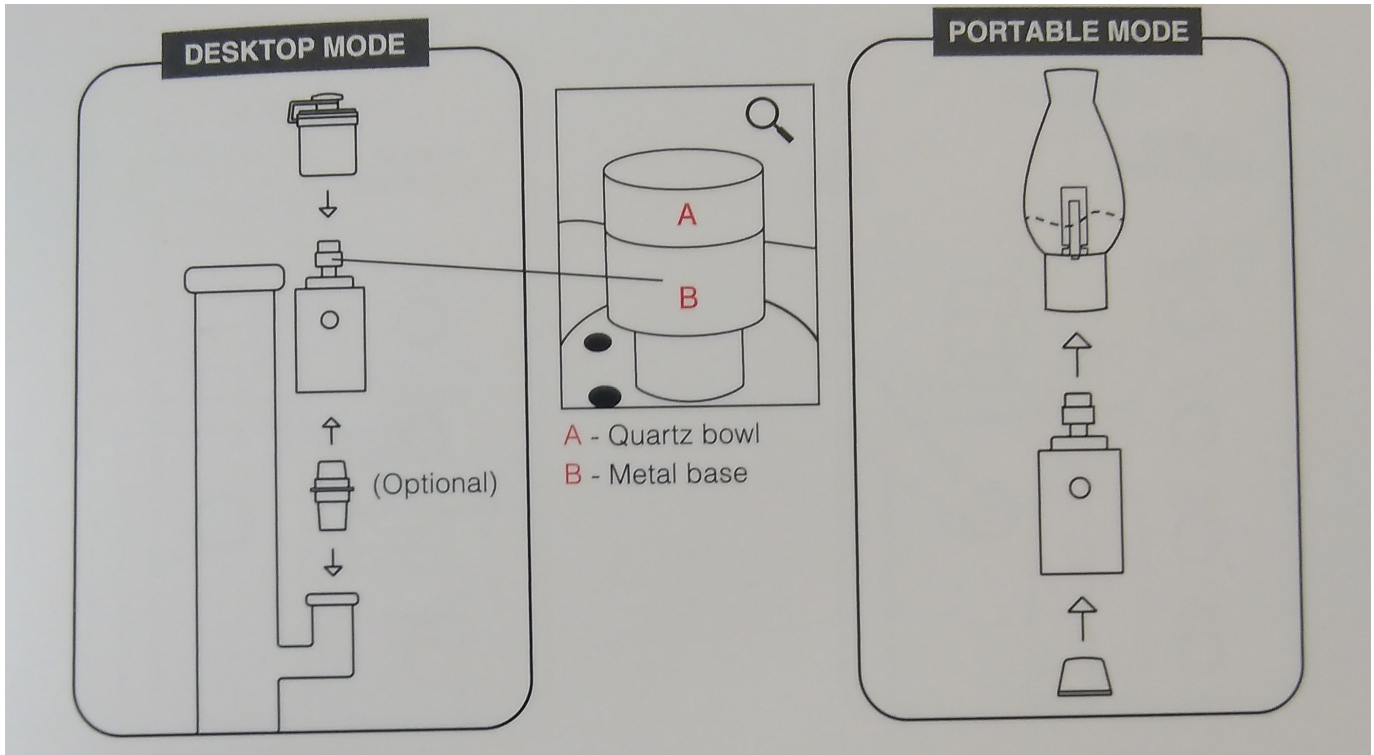
## CHARGING

Plug the USB charger into the Apollo port and connect it to a viable USB power outlet. The power indicator blinks while charging and turns solid when fully charged. A full charge takes about two to three hours.

## LOADING

Load material into the Apollo atomizer, no larger than a grain of rice. Using too much material drains battery power and requires a longer time to heat up and to cool down.

# SET UP



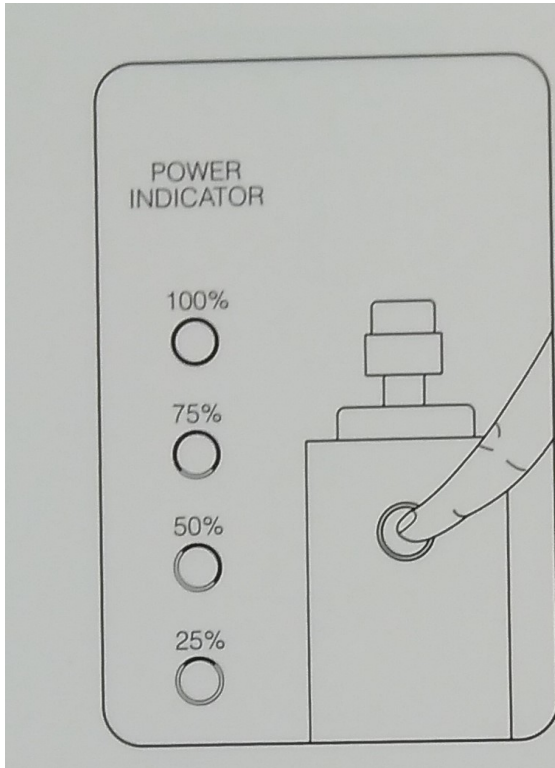
## DESKTOP MODE

Assemble the Apollo base and other parts. Connect the base directly to your glassware with a female downstem, or insert the Apollo water pipe adaptor to the base then attach to the glassware with a male downstem.

**PORTABLE MODE** Connect the Apollo base and atomizer to the bubbler. Also attach the silicone airflow regulator and sleeve from the bottom of Apollo base.

**\*Hold the metal base (B), not the quartz bowl (A), to detach the atomizer. Twisting or applying force to the quartz bowl may damage the bowl and atomizer**

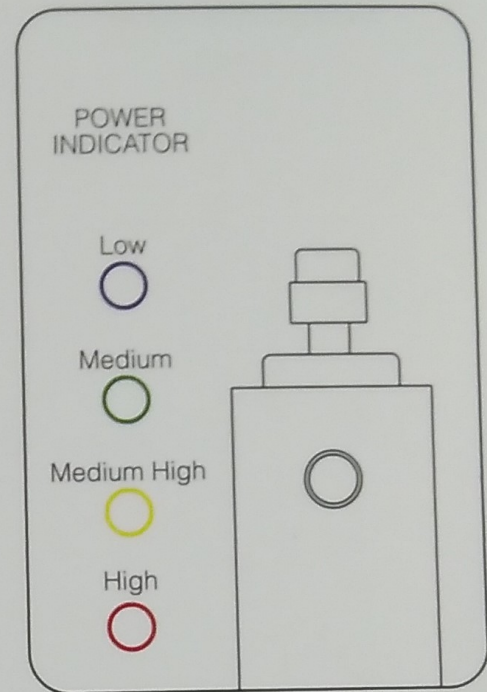
## ON/OFF



Press the power button five times quickly to turn the device on or off. The device enters standby when turned ON and the power indicator becomes solid and displays the battery charge level.

Click the power button once and the device will vibrate to activate or stop heating. The power indicator rotates during heating.

## TEMP SETTINGS

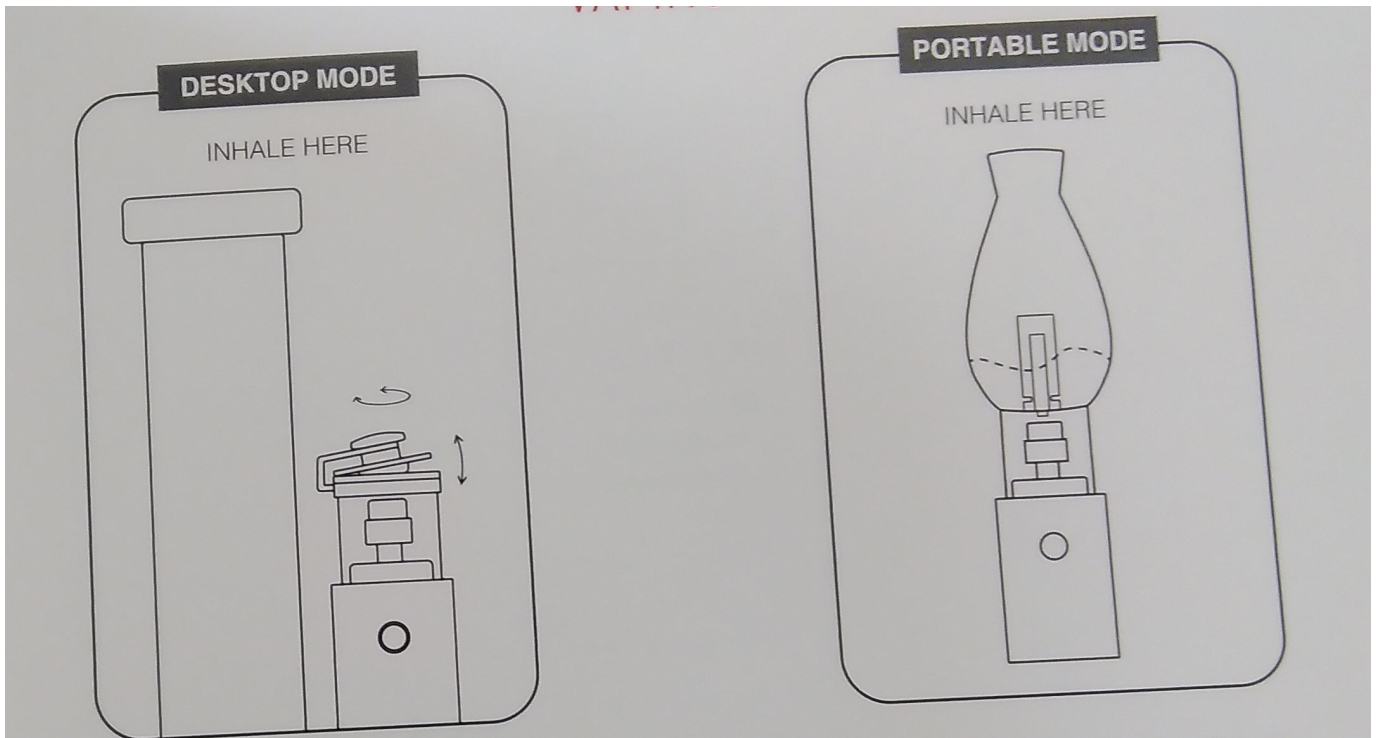


The device is default to the last used temperature when turned on. Press the power button three times quickly to cycle between the four temp settings.

### **OVERHEAT PROTECTION**

The device will automatically enter standby after 30 seconds of continuous heating and shut off after standing by for 30 seconds.

# VAPING

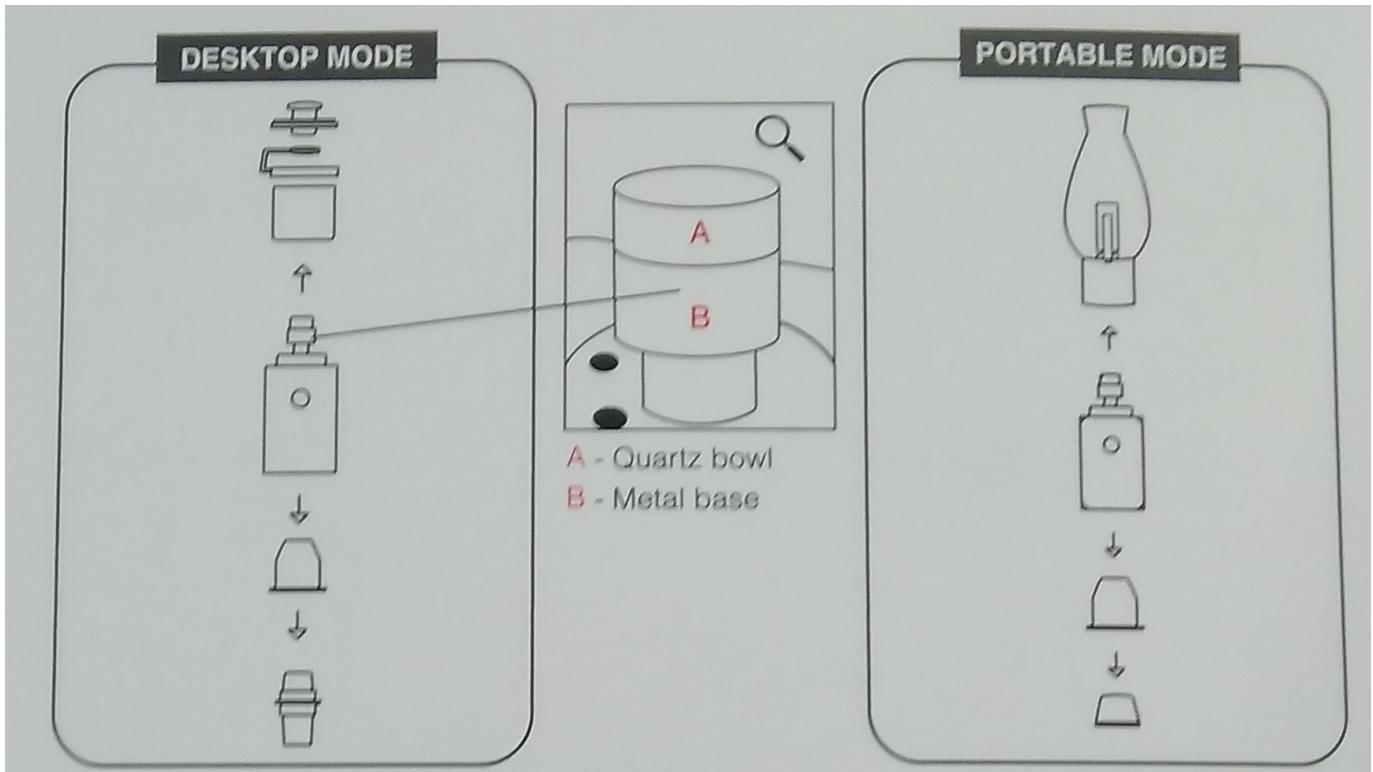


**DESKTOP MODE** Inhale from the glassware mouthpiece with slow steady draws. Gently twist, rotate, open and close the carb cap top to adjust air flow for optimal vapor production.

**PORTABLE MODE** Fill bubbler with water. Be sure not to fill above the percolator. Inhale from the bubble mouthpiece with slow steady draws. Use finger to cover and uncover the silicone airflow regulator to adjust air flow to optimal vapor production.

**HEAT BOOST:** Hold the power button to boost the temperature. The power indicator rotates quickly.

# DISASSEMBLY

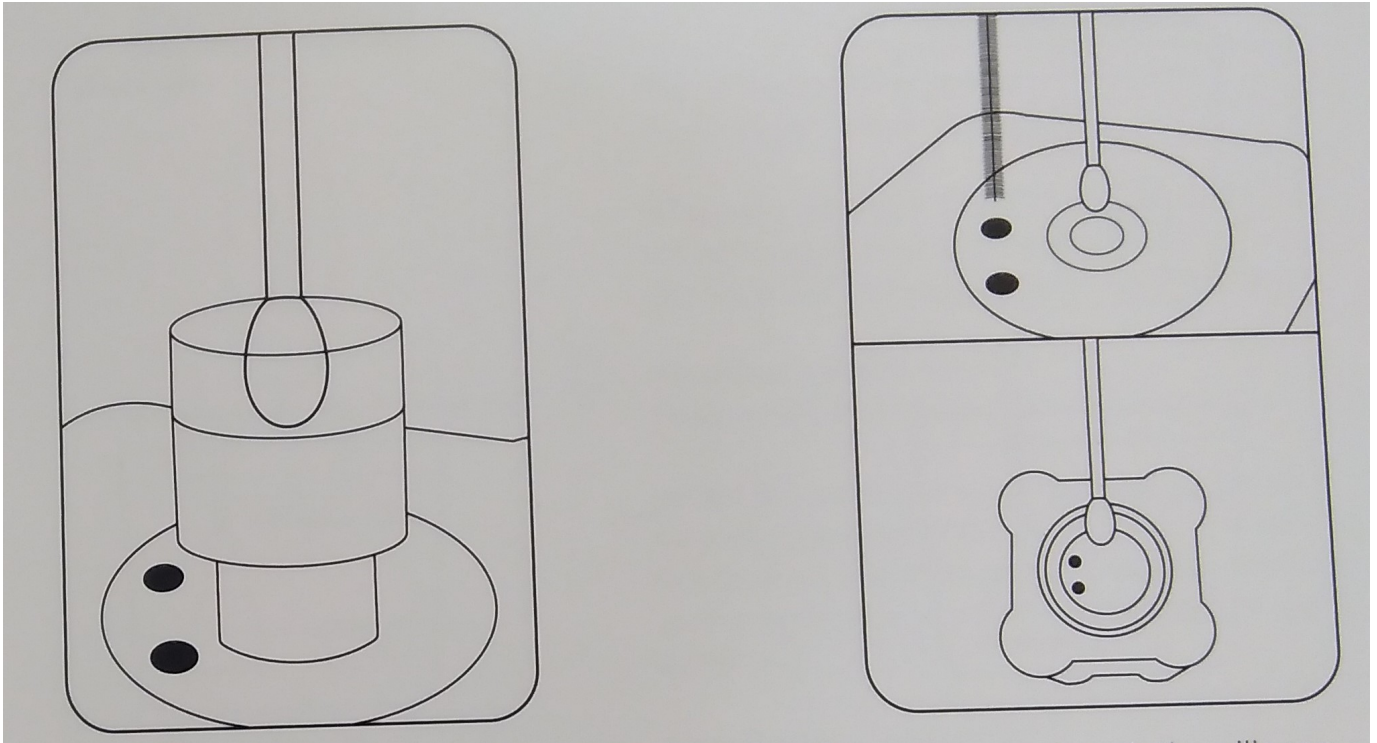


**Completely disassemble the Apollo into parts before cleaning.**

\* Hold the metal base(B), not the quartz bowl, to detach the atomizer. Twisting or applying force to the quartz bowl(A) may damage the bowl and atomizer.

\*Be sure to fully disassemble the silicone Carb Cap Ring from the glass pieces when in desktop mode.

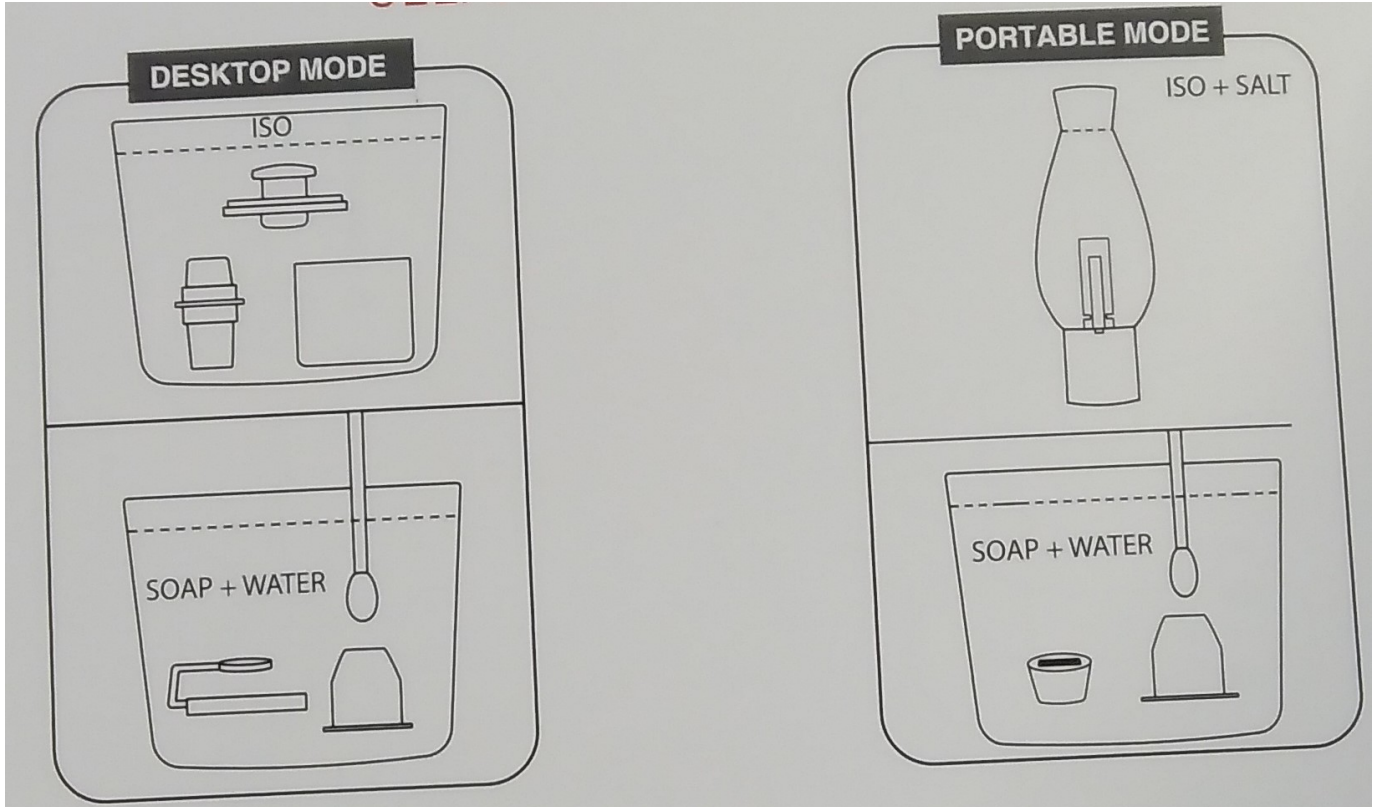
# CLEANING ATOMIZER AND AIR PATH



Turn the Apollo to the re setting or Heat Boost to burt off reclaim in the atomizer. Power off the device and make sure it's fully cooled down. Wet cotton swab with Isoprophyl alcohol. Gently swab the interior of the quartz chamber in a circulation motion. Do not use force as this may permanently damage your atomizer. Swab clean the exterior of the atomizer.

Be sure to detach the silicone airflow regular and sleeve from the bottom of Apollo base. Clean both the top and bottom surface of the Apollo base with cotton swab. Also brush clean the two airholes.

# CLEANING OTHER PARTS



## DESKTOP MODE

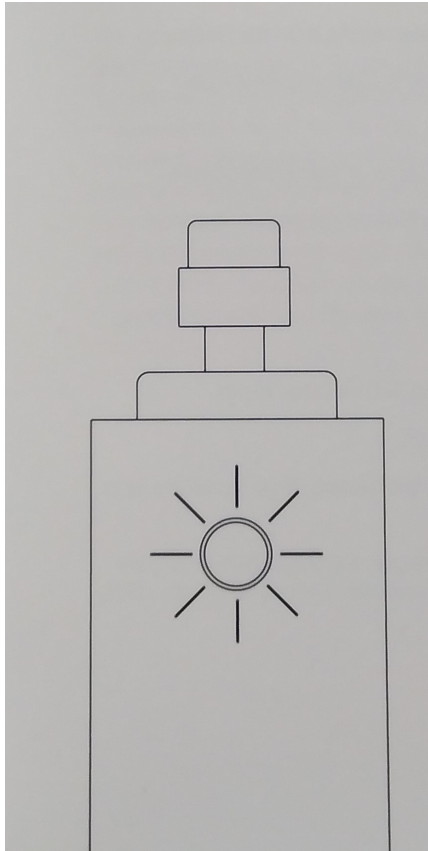
Submerge the glass pieces into Isopropyl alcohol to dissolve any reclaim. Clean all silicone parts with hot soapy water.

**PORTABLE MODE** Mix Isopropyl alcohol and salt and swish the solution in Apollo bubbler for around five minutes. Clean all silicone parts with hot soapy water.

\*Be sure to rinse all glass and silicone pieces thoroughly with running water and let dry before use. Do not use any alcohol solution on silicone as alcohol breaks down and chemically damage silicone.



# PRO TIPS



## **Short Circuit Protection**

Flash white three times.

When the atomizer is short circuited or broken. Apollo shuts off automatically. Replace with a new atomizer immediately.

## **Atomizer Undetected**

Flash white five times

When the atomizer is not presented or doesn't connect well with the Apollo base, the device will shut off automatically. Screw the atomizer to the Apollo base, make sure they are tightly attached.

## **Low Battery Indication**

Flash white ten times

When the battery runs low. charge Apollo before next use.



EST. 2016

# CANATURA

HEMP  LIFE

Canatura - Online store with the best  
hemp products for your health

[www.canatura.com/en](http://www.canatura.com/en)

Copyright reserved